



Scorecard Assessments

John Godfrey

July 2024



Who am I?

- Retired chemical engineer. Worked in and around oil refineries for 37 years.
- Sole trader - in it for the interest & 'giving back', not the income
- Use my experience to help various community groups, including sharing ideas on getting Victoria off fossil gas.
- Based in Cape Paterson, Bass Coast.

www.john27rg.com/scorecard



What is a home energy assessment?

Purpose: Advise on how to live more comfortably at home while using less energy.

Format: A home visit lasting 2 - 3 hours (with possible follow up)

Can take a few forms:

- A formal “Scorecard Assessment” - provides a nationally accredited rating and advice
- A ‘comfort’ assessment - detailed advice but no rating
- Specific advice on a certain topic. E.g. “our HWS is about to die, what are our options?”

Energy assessors also provide information on social media, community forums, etc.

What do you want?



What to expect

An assessor will call you first about what you're looking for.

- Scorecard rating?
- Written report?
- Supplier recommendations / quotes?
- Specific areas of concern

Not all assessors will do everything. As a sole trader, I don't provide quotes for work, but will give some general suggestions about who might be contacted for quotes.

Then - assuming this is what you're after, an assessor will:

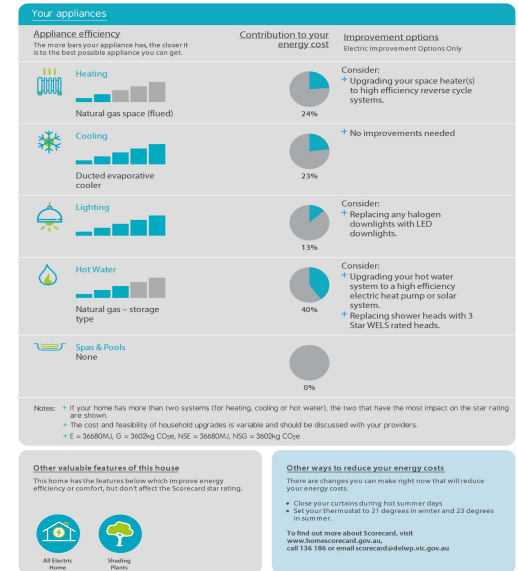
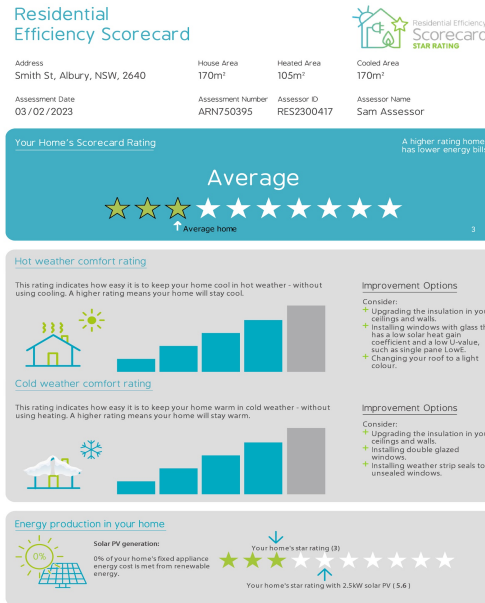
- Provide a scorecard certificate (if desired)
- Advise on how to improve your home's thermal envelope (drafts, insulation, blinds)
- Give advice on key appliances (home heating, HWS, solar panels)
- List useful information sources

So what is a Scorecard?

- Nationally standardised & audited home rating / 10.
1 = a tent
10 = net contributor to grid

Cold & hot weather ratings also given, along with computer based advice.

- Can be used with some financial institutions to access 'green' loans
- It's meant to act the same way as a 'star rating' for washing machines etc, but it's not mandatory.



What's covered in a scorecard?

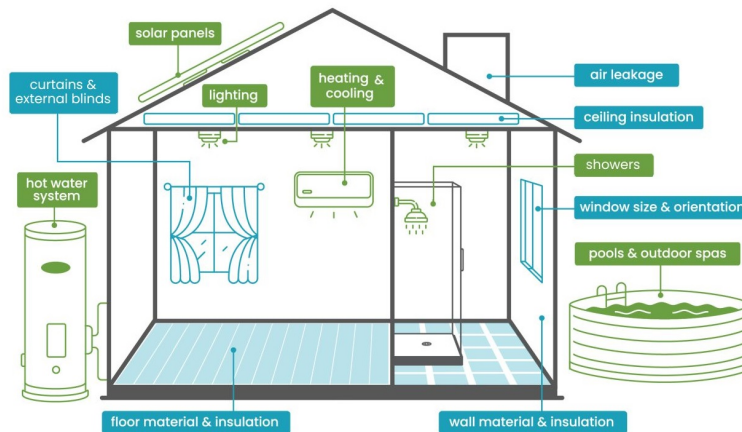
More than a NatHERS design rating as it includes the actual appliances installed.

Assumes an average family living in the home.

Excludes 'portable' appliances (eg fridge, washing machine etc.)

Where possible based on actual inspection or documentation. Is the insulation actually installed in the roof?

What's covered in a Scorecard assessment?



Discover how Scorecard can help: www.homescorecard.gov.au

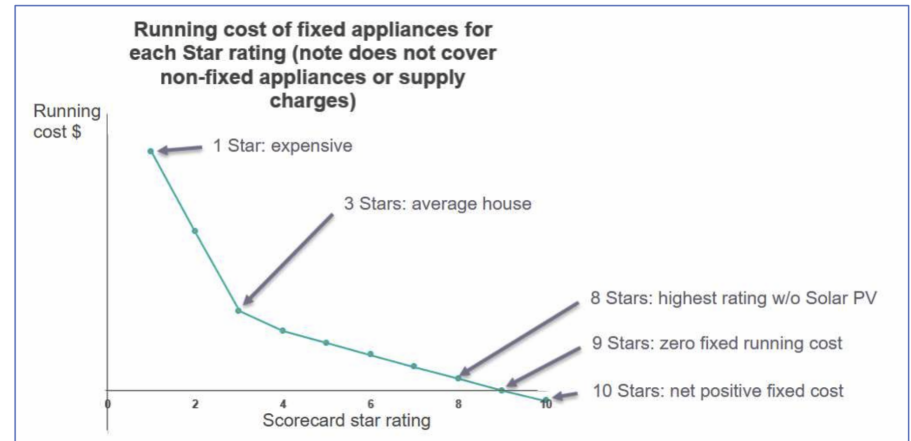
What's the score mean?

Not quite the same as a NatHERS score (also / 10)

The scales have been tuned so that a house designed and built to NatHERS 6 stars, using 3 star appliances for heating etc will probably score 6 stars using the Scorecard.

Note:

NO-ONE has to check that a house designed to 6 or 7 stars actually has been built to that standard!



The running costs depend on the climate and energy costs / kWh at the time.



Why?

In a well designed home you need to pay very little in running costs to stay comfortable.

A 10 star (Scorecard) home will generate more energy across a year than it consumes.

Our home, built to about 8 NatHERS stars, with 13kW of panels and a 11kWh battery not only covers all our home energy costs but also provides about 90% of the annual 'fuel' for our EV.

So, how much are you paying for energy?

(And yes, it's not fair that those who can afford up-front investments end up paying less over time than those who can't.)