

A chance at real climate action

or a wasted opportunity.

LET'S STOP THIS

BECOMING WOOD CHIPS



Rubicon State Forest, Central Highlands, Victoria



The Victorian Forest Alliance brings together more than 30 groups actively protecting native forests across Victoria.

Collectively, we have decades of experience working with our local communities. Our mission is to protect and restore native forests across the state.

ABORIGINAL LANGUAGES OF VICTORIA





Echuca

Shepparton

Albury

Bendigo

VICTORIA

Kosciuszko
National Park

Melbourne

Geelong

Traralgon

Warrnambool

Google



Victoria's forests are globally significant and:

Are some of the world's best ecosystems for storing carbon - making them critical for mitigating climate change impacts

Provide habitat for native wildlife like Greater Gliders, Koalas, large forest owls, and critically endangered Leadbeater's Possum, as well as threatened plant species

Are culturally and spiritually important for First Nations peoples

Are the source of Melbourne's drinking water





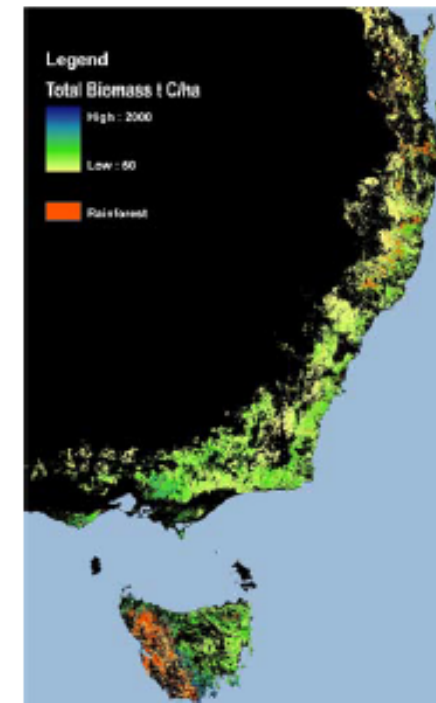
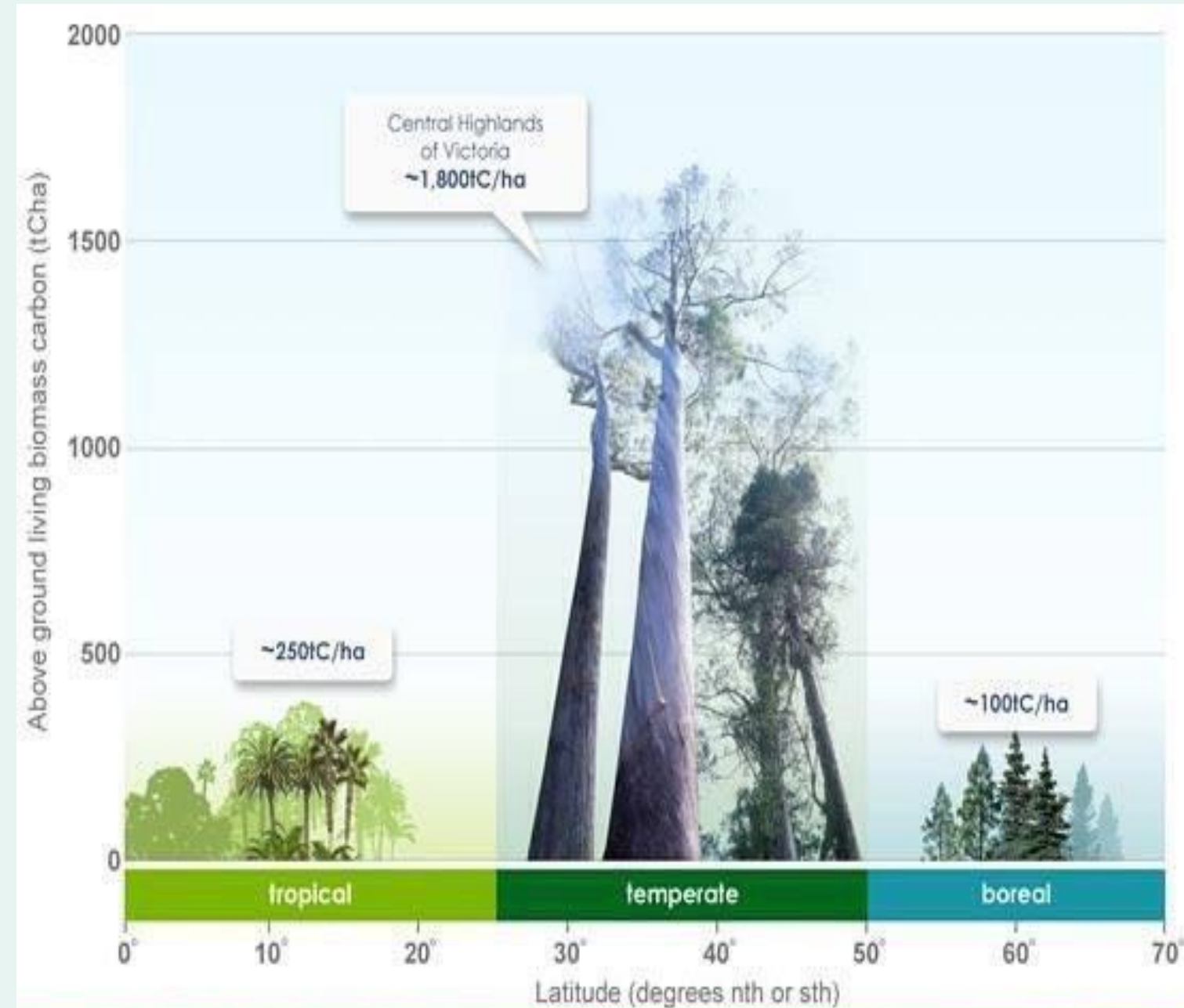


FIGURE 6: SPATIAL DISTRIBUTION OF THE TOTAL BIOMASS CARBON PREDICTED FROM THE MODEL

The distribution of total biomass carbon by area is shown in the histogram with a range of <50 to 2500 t C ha⁻¹.

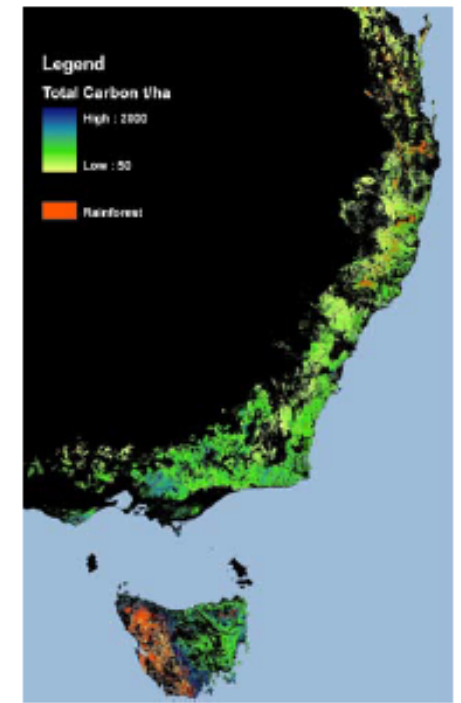
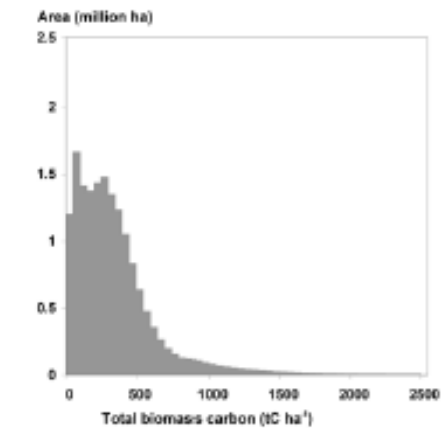
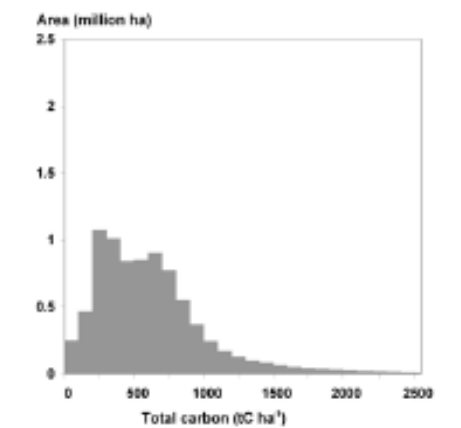


FIGURE 7: SPATIAL DISTRIBUTION OF TOTAL CARBON PREDICTED FROM THE MODEL (THAT IS, THE CARBON CARRYING CAPACITY)

The distribution of total carbon by area is shown in the histogram, with a range of <50 to 2500 t C ha⁻¹.

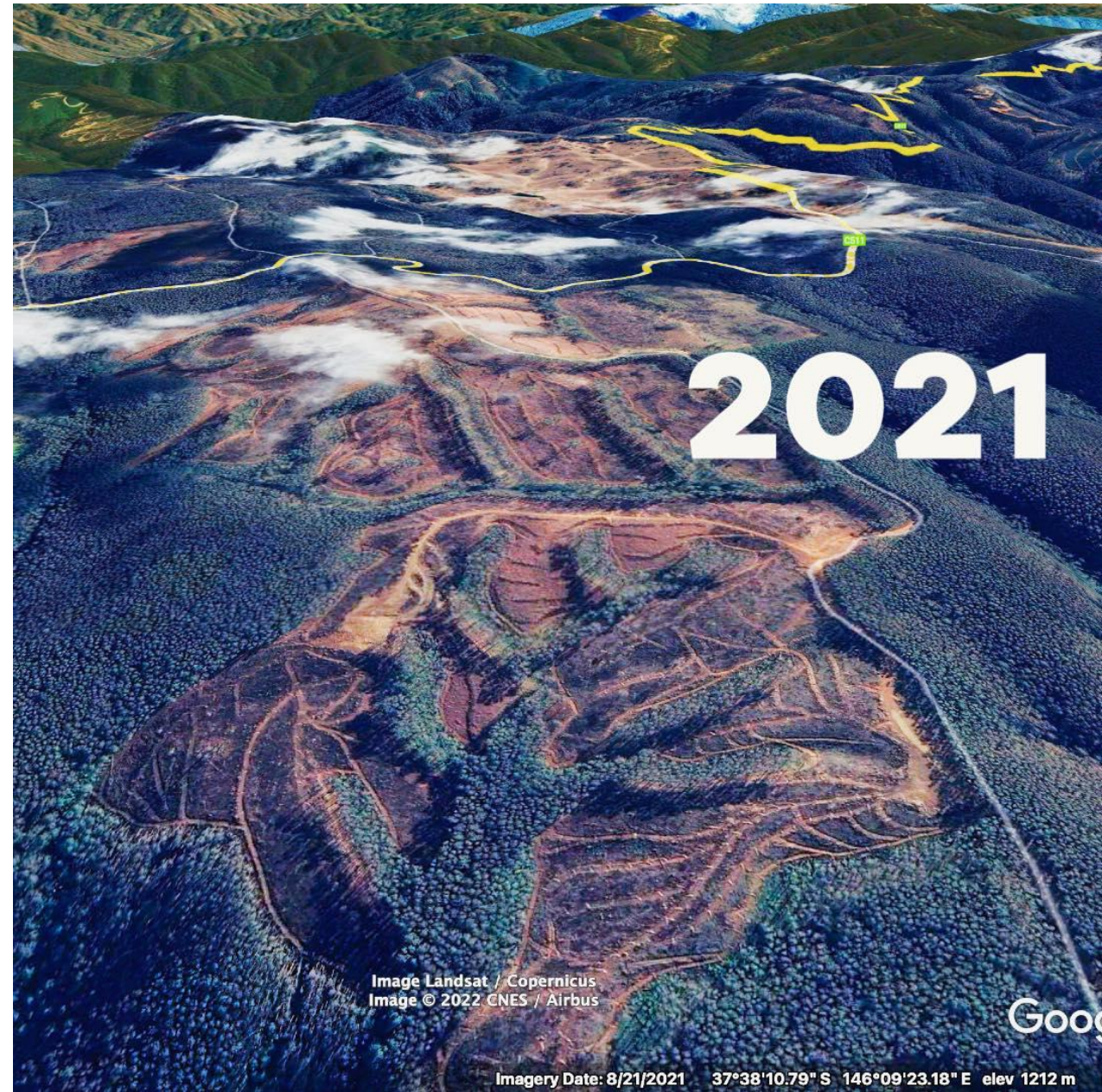


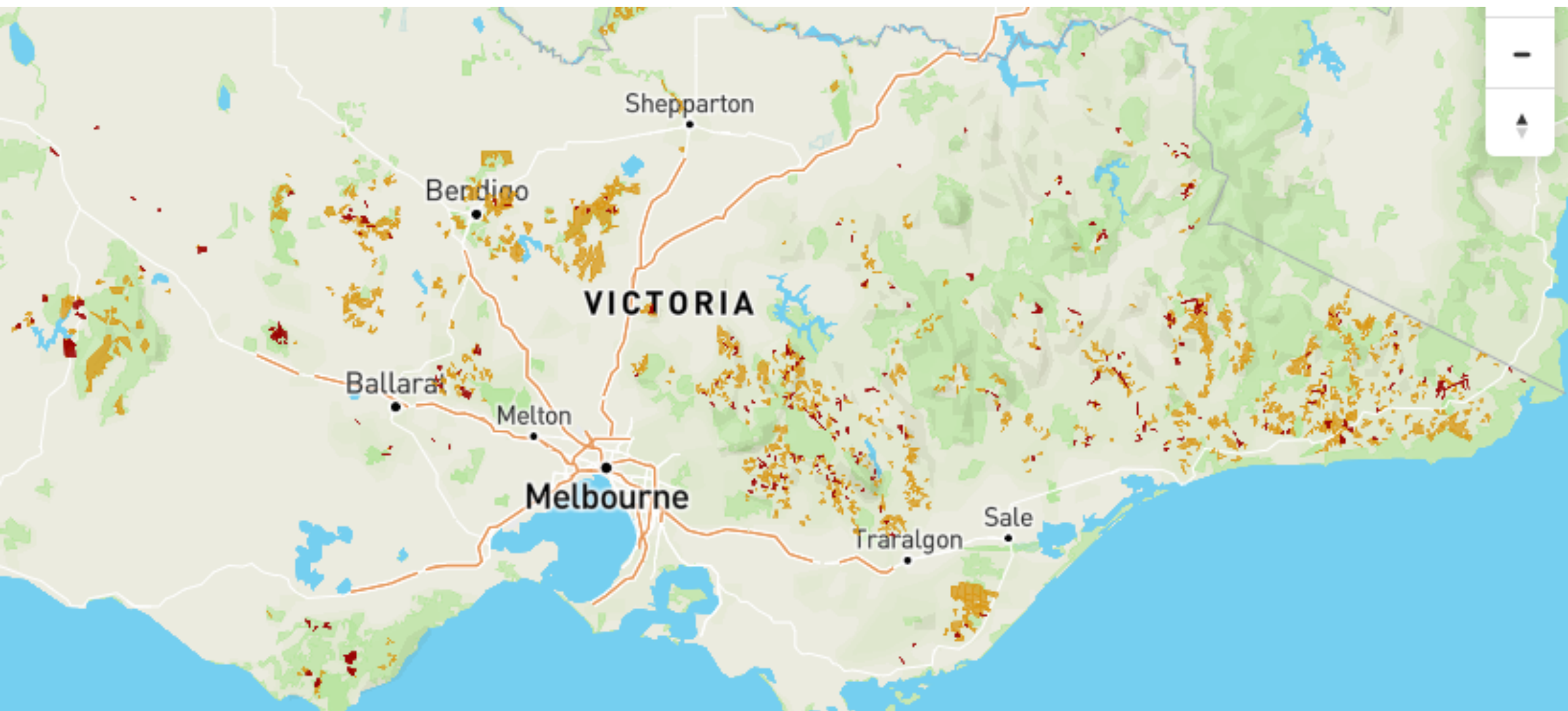
**EVERY YEAR THOUSANDS
OF HECTARES OF FOREST
ARE LOGGED BY THE
VICTORIAN
GOVERNMENT**











Where do the trees go?

~60% biomass is left on-site as 'waste' post logging

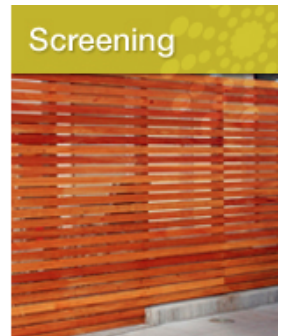
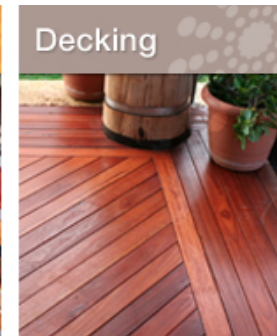
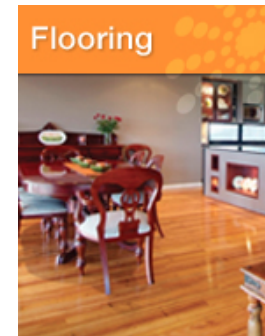


Of what is removed more than 85% is pulp grade - exported from Eden, NSW or pulped at Maryvale, Gippsland to make cardboard and packaging products which end up in landfill

~10% goes to pallet production. There are two major mills in Victoria, they manufacture about 800,000 pallets a year. That's about 3200 pallets a day.⁵



The smallest percentage (~4%) ends up as flooring, decking and screening and some structural timber





VicForests, the state government owned logging company is heavily subsidised by Victorian tax-payers

In 2021 VicForests reported an annual loss of ~\$20 million

Tim Pallas the Victorian Treasurer is the sole shareholder of VicForests

There is very low public support for native forest logging, even in regional communities

Can our timber, fibre, and cardboard needs be met with sources other than native forests?



About Victoria's plantations

Victoria has a mature plantation industry and the largest total area of commercial plantations of all Australia's states and territories with 421,000 hectares (ha) or 22 per cent of the national estate. Currently five out of six trees harvested in Victoria are from plantations with Victoria's plantation estate area generally evenly balanced between softwood and hardwood plantations.

Victoria also has the highest level of plantation wood production in the country at around 7.8 million m³/year and has the largest export volume by some margin (around 5.3 million m³/year).





2030 IS WAY TOO LATE.

In November 2019 after years of campaigning the Daniel Andrews government announced a policy to continue logging for another decade, and end logging in 2030.

This is far too late when we know how significant forests are for taking action on climate change, and the increased bushfire risk faced by regional communities from decades of destructive logging.

The government also announced an immediate end to all old growth forest logging. Within two months the definition of old growth forests changed, and old growth forest logging in Victoria has since continued in areas like this in Swifts Creek, East Gippsland.



Mount Alfred, East Gippsland
Credit: Friends of Bats and Habitat Gippsland



**HOW AND WHY WE'RE MAKING THIS AN
IMPORTANT ISSUE IN THE LEAD UP TO
THE VICTORIAN STATE ELECTION**



victorianforestalliance.org.au

twitter.com/alliance_forest

facebook.com/VicForestAlliance

instagram.com/victorianforestalliance